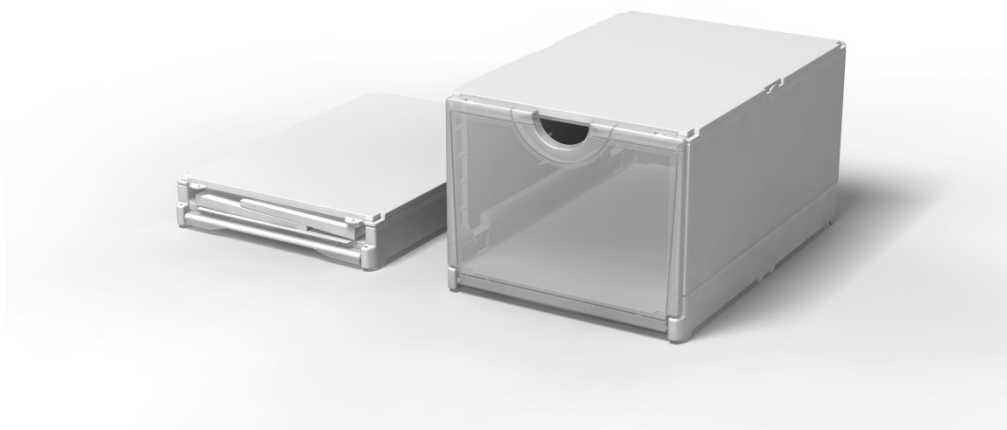


Data sheet

Plusbox



Technical details

Product description		Plusbox
Wall Structure		closed
Colors		Box white or black (flap: colorless, transparent oder colored)
Country of origin		Germany
Certifications (production plant)		ISO 9001; ISO 14001; ISO 50001; REACH
Material		PP (Polypropylen)
Barcode		EAN 13 digits
HS Code		39249000
Outer dimensions (in mm)	height	209
	width	266
	depth	398
Inner dimensions (in mm)	height	167
	width	237
	depth	376
Height folded (in mm)		63
Height (folded) in the stack (in mm)		58,3
Useful interior height		N/A
Volume (in litres)		15,2
Weight (in g)		1072
Load capacity (in kg)		3
Stacking load (in kg)		50
Temperature resistance	short	N/A
	long	N/A

Transport

	VPE (small)	standard pallet	pallet to 2,20m	pallet 2,20m - 2,40m	pallet 2,40m – 2,60m
Quantity / number of items	1	225	315	342	N/A
Cardboard / bundle quantity	1	N/A	N/A	N/A	N/A
Height gross (in cm)	58,3	162	219	238	N/A
Width (in cm)	237	80	80	80	N/A
Depth (in cm)	376	120	120	120	N/A
Weight (in kg)	1,072	264,2	357,68	389,62	N/A
Transport packaging	Lose Ware	EP	EP	EP	N/A

Due to the manufacturing, there may be deviations in the weights.

EP = euro pallet

DP = display pallet

N/A = not available